

Map

Welcome to the
National Gallery

NG

A

VISIT GUIDELINES

ITEMS LARGER THAN 30CM X 30CM

Bags or items larger than this cannot be taken into the galleries. Please use the self-service lockers in the Art Store. Bags smaller than this must be carried on your front or by your side.

SHOW KINDNESS AND RESPECT

Please treat our team with kindness and respect, they are here to help and keep you and the art safe.

KEEP YOUR DISTANCE

Help us take care of the art. Please stay 1m back from works of art.

SAFETY MEASURES

Keep a safe physical distance of 1.5m from others. Wearing face masks is encouraged.

NO FOOD AND DRINK IN THE GALLERIES

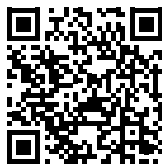
Water can be consumed in foyer areas only. Please ensure water bottles are placed in bags at all other times.

PHOTOGRAPHY

Photography for personal use is welcomed. Photography for commercial use, use of flash, selfie-sticks and tripods is not permitted.

CONDITIONS OF ENTRY

To view all Conditions of Entry, please scan the QR code below or visit nga.gov.au/visit/conditions-of-entry



L1: Claude Monet, *Nymphéas [Waterlilies]*, c.1914-17, National Gallery of Australia, Kamberri/Canberra, purchased 1979; Ramingining artists, Djon Mundine, *Bandjalung people, The Aboriginal Memorial*, 1987–88, National Gallery of Australia, Kamberri/Canberra, Purchased with the assistance of funds from National Gallery admission charges and commissioned in 1987 © Ramingining artists/Copyright Agency, 2023;
L2: Virginia Cuppaidge, *Lyon*, 1972, National Gallery of Australia, Kamberri/Canberra, gift of the artist 2012 © Virginia Cuppaidge; Dale Frank, *Doug'ese bottomless bungie thru the trivial funky conduit*, 1998, National Gallery of Australia, Kamberri/Canberra, the Dale Frank Gift 2014

THE NATIONAL GALLERY ACKNOWLEDGES THE NGUNNAWAL AND NGAMBRI PEOPLES, THE TRADITIONAL CUSTODIANS OF THE KAMBERRI/CANBERRA REGION, AND RECOGNISES THEIR CONTINUOUS CONNECTION TO CULTURE, COMMUNITY AND COUNTRY.

GENERAL INFORMATION

GUIDED TOURS

Explore the collection and exhibitions with a Gallery Guide.

Daily collection tours:
10.30am and 2pm

ACCESS

Mobility scooters, wheelchairs, walkers and canes can be hired for free from the Concierge desk. Large print booklets are available for major exhibitions.

FAMILY-FRIENDLY

You are welcome to breastfeed wherever you feel comfortable to do so. Strollers can be hired for free from the Concierge desk. Soft fabric style baby carriers are welcome. To protect the art, framed baby back carriers are not permitted.

FREE WI-FI

Available throughout the building. Charging stations are located in the Art Store seating area.

CONTACTLESS PAYMENTS

The Gallery accepts contactless payments only, no cash.

STREET CAFÉ

Serving fresh seasonal salads and sandwiches, sweet and savoury snacks, a selection of hot items and Seven Miles coffee.

Mon to Fri 9am–2.30pm
Sat and Sun 9.30am–2.30pm

DINING ROOM

Kitchen by Mike seasonal menu.
Lower ground, daily 11am–3pm

ENQUIRIES

information@nga.gov.au
+61 2 6240 6411
nga.gov.au
[#nationalgalleryau](https://www.instagram.com/nationalgalleryau)

LG

Lift B and C
Access L1, L2, L2 Mezzanine

Stairs
Ramp
Dining Room

Exhibition
JORDAN WOLFSON:
BODY SCULPTURE
Until 28 July
Galleries 16 & 18

Free with ticket. World premiere of Wolfson's latest robotic artwork.

Performance Sessions

Thursday and Friday – 11am, 1pm, 2.15pm

Saturday and Sunday – 11am, 1pm, 2.15pm, 3.30pm

Viewer discretion is advised.

Book free tickets at the concierge desk or online at nga.gov.au

Duration approximately 30 mins.

G MAIN ENTRY

Toilets
Ambulant
Accessible Toilet
Parents Room
Escalator

Lift A
Access L1, L2
Lift D
Access L1
Stairs
Ramp

Concierge Desk
Tickets and information. Membership sign ups and renewals.

Art Store
Browse contemporary art products and books. Members enjoy a 10% discount. All purchases support the Gallery.

Cloaking
Cloak belongings in the free self-service lockers in the Art Store. Items and bags larger than 30cm x 30cm including large umbrellas, poster tubes and tripods must be cloaked.

L1

Toilets
Ambulant
Parents Room

Escalators
Lift A
Access G
Lift B
Access L2, L2 Mezz
Lift C
Access L2
Lift D
Access G
Stairs
Ramps

Collection
ABORIGINAL AND TORRES STRAIT ISLANDER ART
Ongoing
Galleries 1, 5 & 6

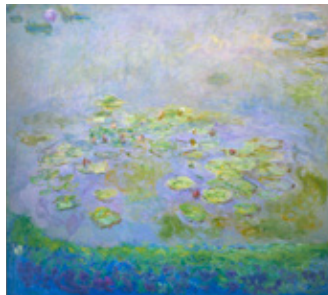
Exhibition
VINCENT NAMATJIRA:
AUSTRALIA IN COLOUR
Until 21 July
Galleries 2–4

Exhibition
GAUGUIN'S WORLD:
TŌNA IHO, TŌNA AO
Until 7 Oct
Gallery 12
Ticketed. Purchase tickets at the concierge desk or online nga.gov.au

Collection
WORLDWIDE
Ongoing
Galleries 7–10, 13 & 14

Exhibition
ANNI AND JOSEF ALBERS
Until 22 Sept
Gallery 15

Exhibition
SAVĀGE K'LUB: TE PAEPAE AORA'I – WHERE THE GODS CANNOT BE FOOLED
Until 7 Oct
Gallery 11



Claude Monet,
Nymphéas [Waterlilies],
c.1914–17
Gallery 13, Level 1



Ramingining artists,
Djon Mundine, Bandjalung people,
The Aboriginal Memorial,
1987–88
Gallery 9, Level 1

L2

Toilets
Lift A
Access L1, G
Lift B
Access L1, L2 Mezz
Lift C
Access L1
Stairs
Ramp

Collection
AUSTRALIAN ART
Ongoing
Galleries 19–25

Exhibition
A CENTURY OF QUILTS
Until 25 Aug
Gallery 26

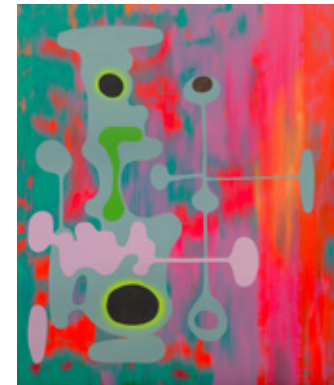


Virginia Cuppidge,
Lyon, 1972
Gallery 24, Level 2

L2 MEZZANINE

Toilets
Lift B
Access LG, L1, L2

Members Lounge
Open daily 10.15am–4pm
Members and their guests enjoy complimentary tea and coffee with views of the Lakeside Sculpture Garden.












Dale Frank,
Doug'ese bottomless bungie thru the trivial funky conduit,
1998
Gallery 24, Level 2

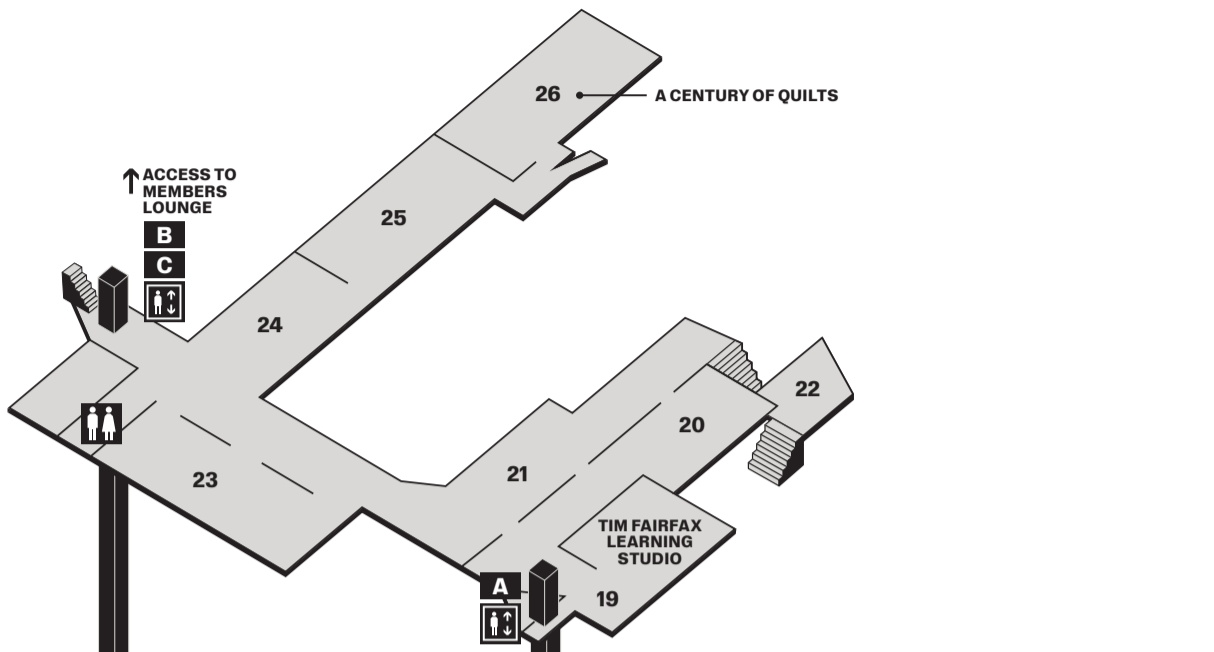


Book tickets online here

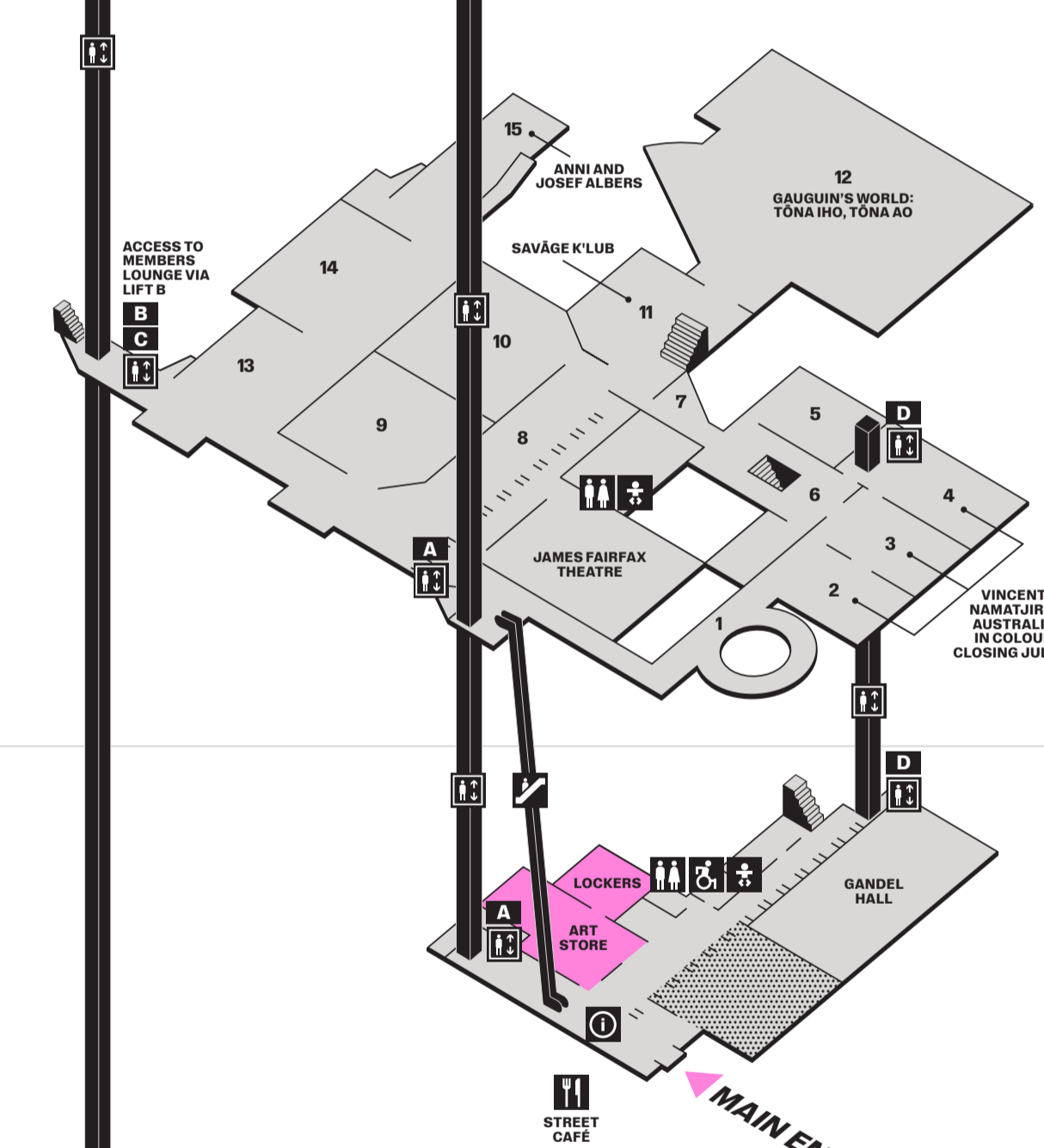
Gallery Map

-  STAIRS
-  ESCALATOR
-  LIFTS
-  RAMPS
-  INFORMATION
-  TOILETS
-  ACCESSIBLE TOILETS
-  PARENTS ROOM
-  TEMPORARY CLOSURES

L2

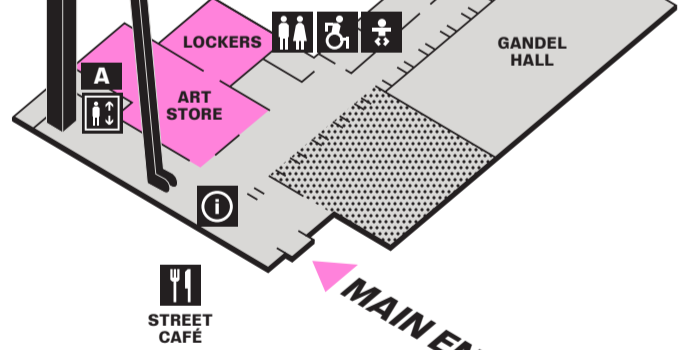


L1

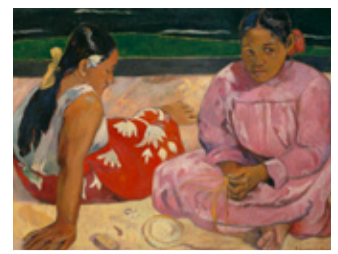
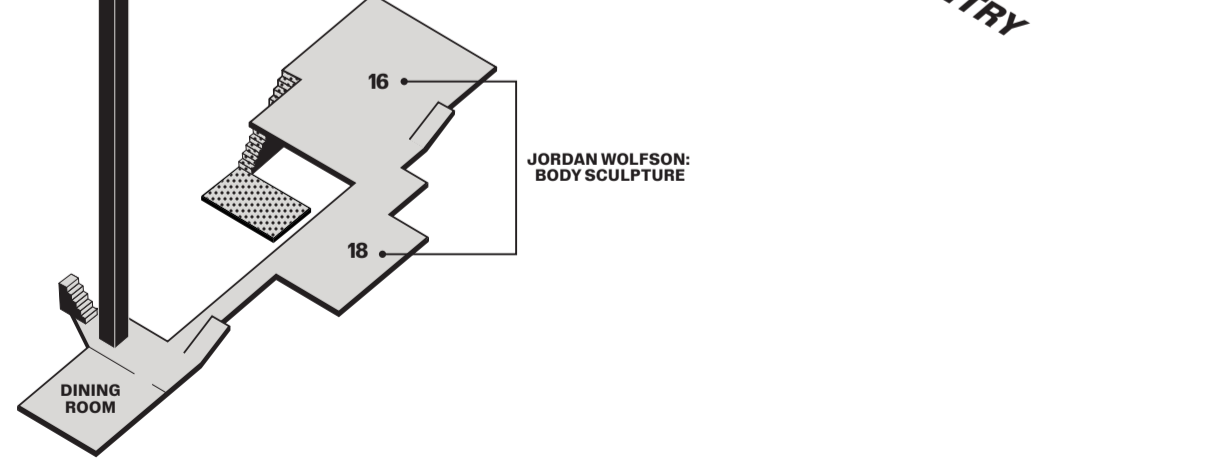


G

ENTRY LEVEL
ART STORE



LG



Paul Gauguin,
Femmes de Tahiti, 1891
Gallery 12, Level 1



SaVAge K'lub,
Installation view, 2024
Gallery 11, Level 1



Vincent Namatjira,
Western Aranda people,
Displaced, 2021
Galleries 2-4, Level 1



Jordan Wolfson,
Body Sculpture, 2023
Gallery 16, Lower Ground



Josef Albers,
White line square III, 1966
Gallery 15, Level 1



**Convict women on the
HMS Rajah, Kezia Hayter,**
The Rajah quilt, 1841
Gallery 26, Level 2

SCULPTURE GARDEN HIGHLIGHTS



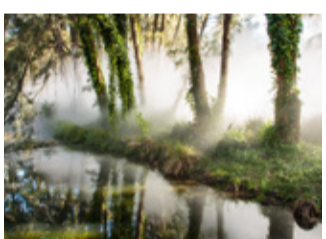
**A. Matilda W. House,
Paul House, Ngambri/
Ngunnawal peoples,**
*Mulanggari yur-wang (alive
and strong)*, 2021-2022



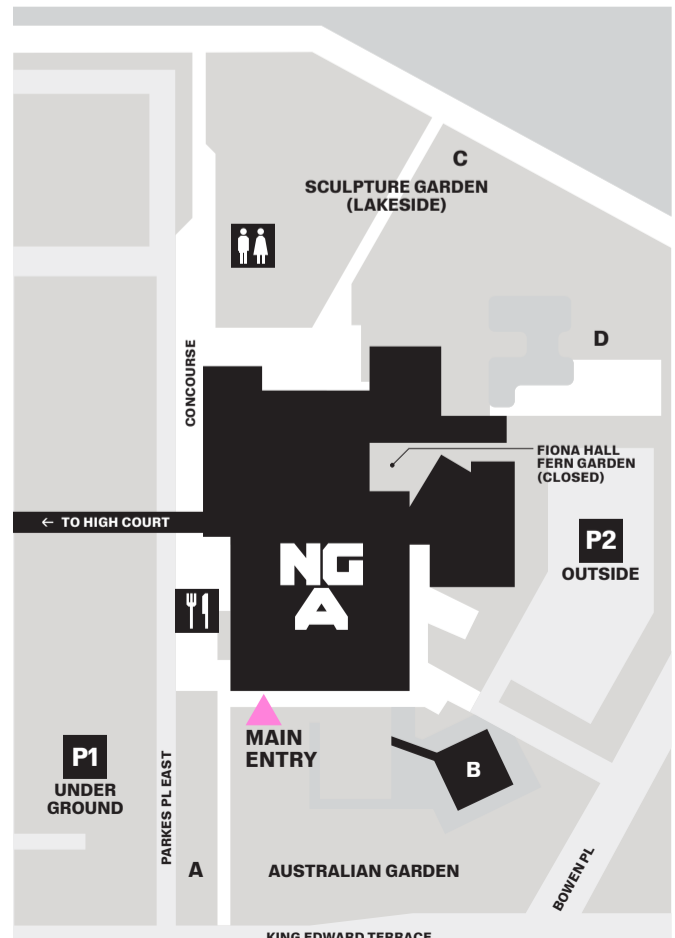
B. James Turrell,
Within without, 2010
Best viewed at dawn
and dusk



**C. Janet Fieldhouse, Kalaw
Lagaw Ya/Meriam Mir
peoples, *Sister Charm*,**
2023



D. Fujiko Nakaya,
*Foggy wake in a desert:
An ecosphere*, 1982
Operates daily 12.30-2pm



12: Paul Gauguin, *Tahitian women (Femmes de Tahiti)* 1891, Musée d'Orsay, Paris, gift of Countess Vitali 1923. Photo: © GrandPalaisRmn (musée d'Orsay) / Hervé Lewandowski;
 2: Vincent Namatjira, *Western Aranda people, Displaced*, 2021, National Gallery of Australia, Kamberri/Canberra, purchased in celebration of the National Gallery of Australia's 40th anniversary, 2022 © Vincent Namatjira/Copyright Agency; 15: Josef Albers, Gemini G.E.L., *White line square III*, 1966, National Gallery of Australia, Kamberri/Canberra, purchased 1973 © The Josef and Anni Albers Foundation. VG Bild-Kunst/Copyright Agency; 11: SaVAge K'lub, *Installation view*, 2024, National Gallery of Australia, Kamberri/Canberra; 16: Jordan Wolfson, *Body Sculpture (detail)*, 2023, National Gallery of Australia Kamberri/Canberra, purchased 2019 © Jordan Wolfson. Courtesy Gagolian, Sadie Coles HQ, and David Zwirner. Photo: David Sims; 26: Convict women on the *HMS Rajah*, Kezia Hayter, *The Rajah quilt*, 1841, National Gallery of Australia, Kamberri/Canberra, gift of Les Hollings and the Australian Textiles Fund 1989; A: Matilda W. House, Paul House, Ngambri/Ngunnawal peoples, *Mulanggari yur-wang (alive and strong)*, 2021-2022, National Gallery of Australia, Kamberri/Canberra, purchased 2022 © the artists; B: James Turrell, *Within without*, 2010, National Gallery of Australia, Kamberri/Canberra, purchased with the support of visitors to the Masterpieces from Paris exhibition 2010 © James Turrell; C: Janet Fieldhouse, Kalaw Lagaw Ya/Meriam Mir peoples, *Sister Charm*, 2023, National Gallery of Australia, Kamberri/Canberra, on loan from the artist and Art Makers; D: Fujiko Nakaya, *Foggy wake in a desert: An ecosphere*, 1982, National Gallery of Australia, Kamberri/Canberra, purchased 1977 © Fujiko Nakaya