

The background is an abstract composition of vibrant orange and deep, dark blue/black tones. It features expressive, gestural brushstrokes and textures, with some areas appearing more saturated and others more muted. The overall effect is dynamic and artistic, suggesting a creative or intellectual process.

# **PROOFS & PROCESSES**

## **THE KENNETH TYLER COLLECTION**

# Exhibition overview

To celebrate the release of *Tyler Graphics Catalogue Raisonné 1986—2001*, in June 2025 the National Gallery will present *Proofs & Processes: The Kenneth Tyler Collection* – a selection of works from the catalogue alongside associated proofs and archival material that unpack their creation.

*Proofs & Processes* draws from the Kenneth E. Tyler Collection and Archive to highlight the creativity and ingenuity required to make prints that pushed late 20<sup>th</sup> century American printmaking into a new realm of material excellence.

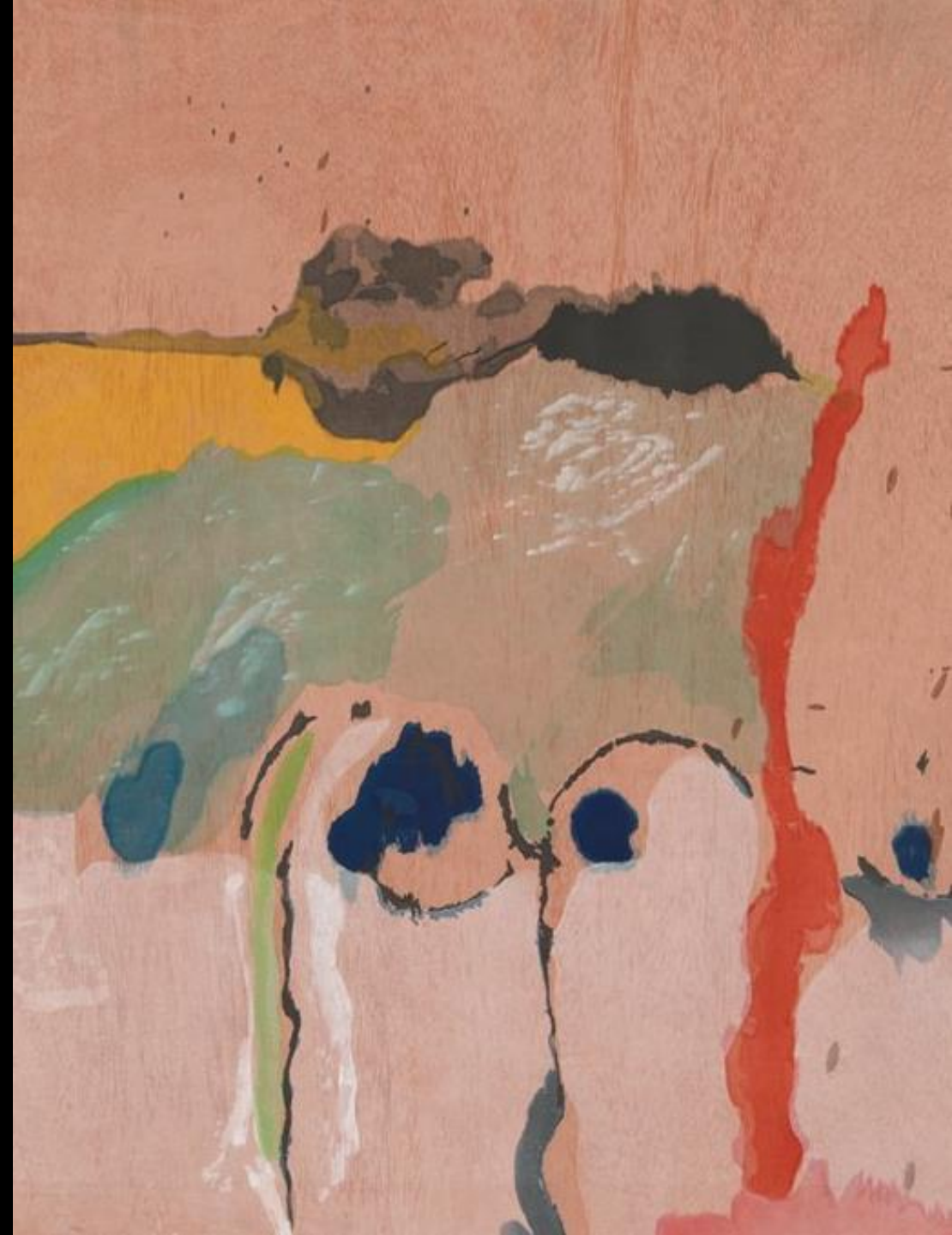
This exhibition features works by iconic American artists: Helen Frankenthaler, Roy Lichtenstein, Joan Mitchell, Robert Motherwell, James Rosenquist and Frank Stella.

**Available**  
From July 2026



Helen Frankenthaler, Tyler Graphics  
*Tales of Genji I*, 1998, (detail)  
National Gallery of Australia, Kamberri/Canberra  
purchased with the assistance of the Orde Poynton Fund 2002 and gift of Kenneth Tyler 2000  
© Helen Frankenthaler / Tyler Graphics Ltd. 2000

**Cover image:**  
Robert Motherwell  
*Elegy sketch proof variation XV*, (detail) 1990  
National Gallery of Australia, Kamberri/Canberra  
gift of Kenneth Tyler 2002  
© Dedalus Foundation, Inc. VAGA/Copyright Agency



# About the Kenneth Tyler Collection

The Kenneth E. Tyler Collection at the National Gallery of Australia is the most comprehensive collection of prints produced by the master printmaker and publisher. It contains of over 7400 editioned prints, proofs, drawings, paper works, screens, multiples and illustrated books as well as an archive of photography, film, audio and workshop materials.

This collection encompasses the work of North American artists over four decades and has been the source for an ongoing program of research, exhibitions and publications at the National Gallery.

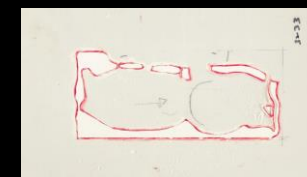
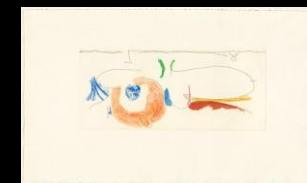
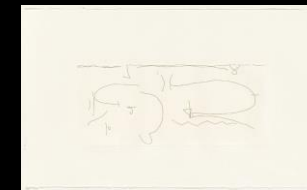
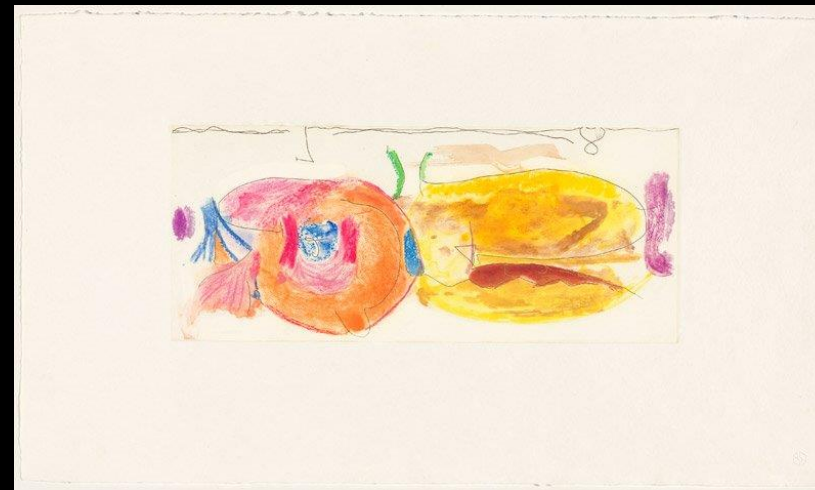


Kenneth Tyler working on the woodblock for Helen Frankenthaler's 'Tales of Genji I,' Tyler Graphics Mount Kisco, New York, 1997 (detail) © Photographs by Marabeth Cohen-Tyler

# Archival material

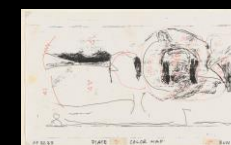
The Kenneth E Tyler Collection archive allows artists, researchers and audiences to have a deep dive into the create these masterpieces.

This exhibition pairs edition quality prints with associated proofs, matrices and archival material—revealing layers of complicated printmaking processes. It presents a wonderful education opportunity for audiences to learn about a wide variety of printing techniques, as well as the collaborative relationship between artist and printer.



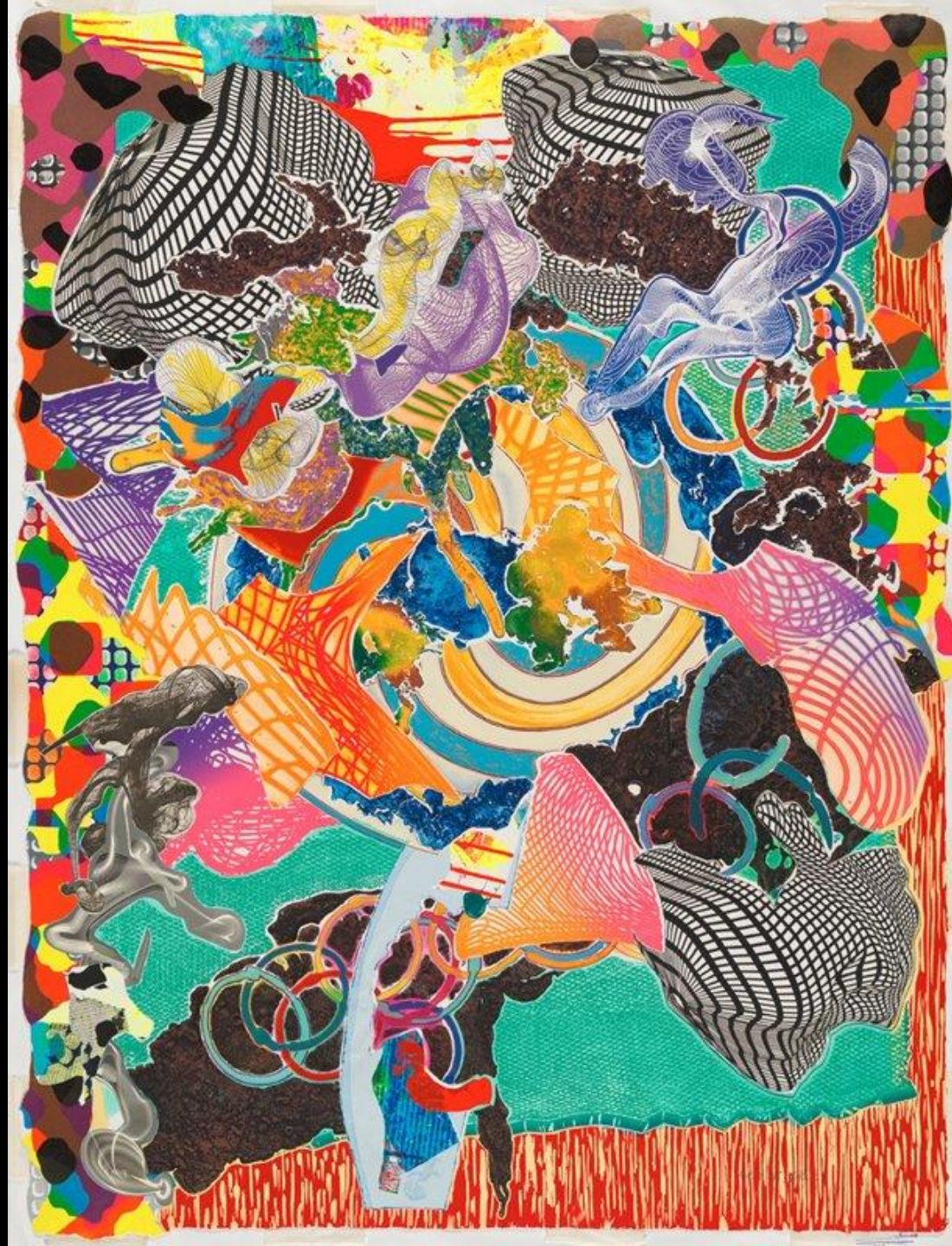
Helen Frankenthaler, Tyler Graphics (printer and publisher)  
*Round Robin*, 2000, (right to print, progressive proofs, colour maps and colour charts),  
National Gallery of Australia, Kamberrri/Canberra  
purchased with the assistance of the Orde Poynton Fund 2002 and  
gift of Kenneth Tyler 2000  
© Helen Frankenthaler / Tyler Graphics Ltd. 2000

Anthony Kirk applying ink and printing Helen Frankenthaler's  
'Round robin,' Tyler Graphics, Mount Kisco, New York, 1997 ©  
Photographs by Marabeth Cohen-Tyler



# About the Kenneth Tyler Collection

The Kenneth E. Tyler Collection at the National Gallery of Australia is the most comprehensive collection of prints produced by the master printmaker and publisher. It contains of over 7400 editioned prints, proofs, drawings, paper works, screens, multiples and illustrated books as well as an archive of photography, film, audio and workshop materials. This collection encompasses the work of North American artists over four decades and has been the source for an ongoing program of research, exhibitions and publications at the National Gallery.



# Express interest

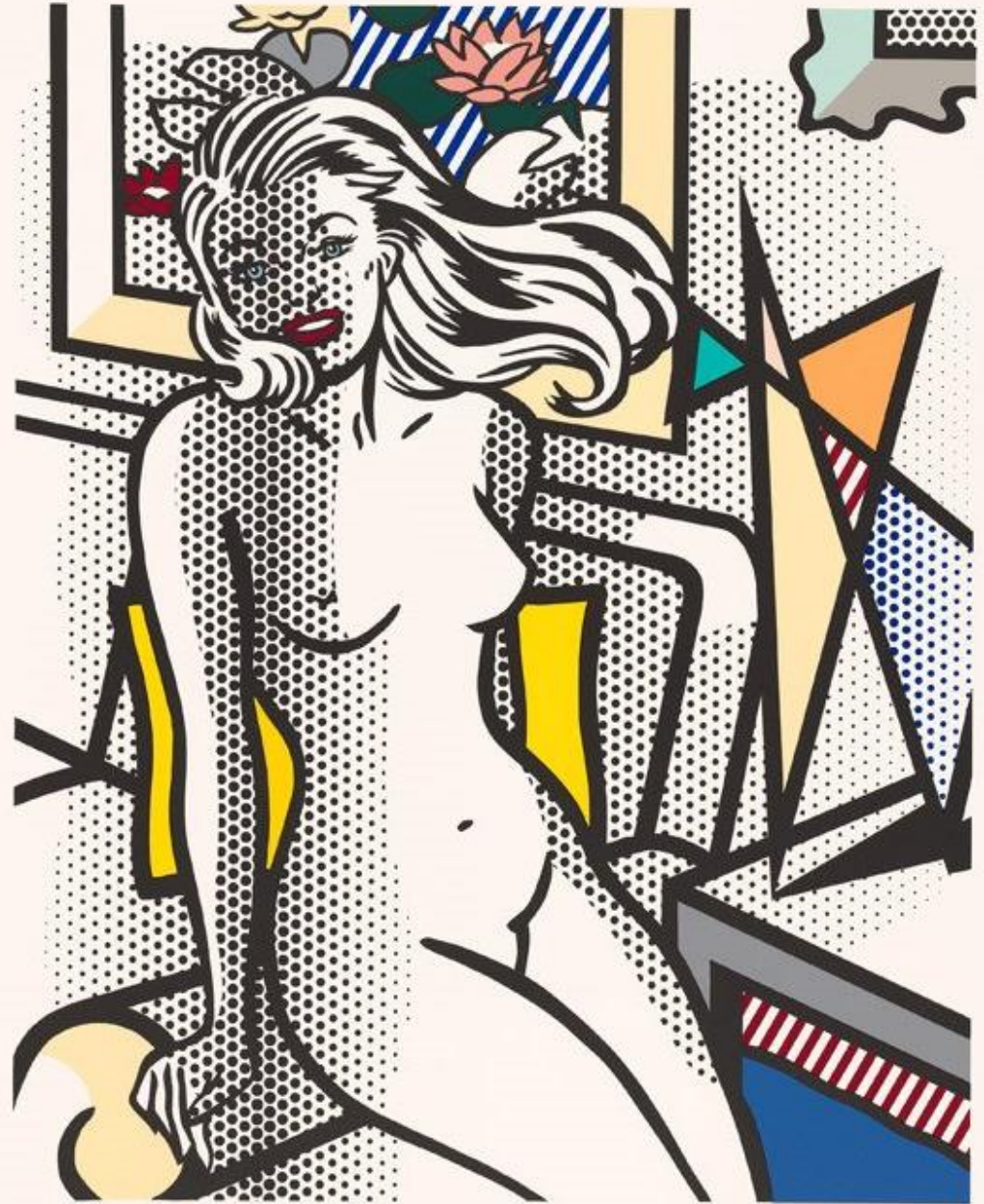
As this touring exhibition is currently in development, you can share your thoughts and express your interest in hosting it at your venue via this [form](#).

## Questions?

For more information, please email [touringexhibitions@nga.gov.au](mailto:touringexhibitions@nga.gov.au)



Roy Lichtenstein, Tyler Graphics (printer and publisher)  
*Nude with yellow pillow*, 1992  
National Gallery of Australia, Kamberri/Canberra  
purchased with the assistance of the Orde Poynton Fund 2002  
© Estate of Roy Lichtenstein/Copyright Agency





**National Gallery of Australia  
Ngunnawal and Ngambri Country  
Parkes Place East, Parkes ACT 2600 Australia  
T+ 61 2 6240 6411 [nga.gov.au](http://nga.gov.au)**