

# RICHARD LEWER

## STEVE





# Exhibition overview

Richard Lewer's *Steve* is a gentle exploration of the complexity of a family coming to terms with a dementia diagnosis.

Through animation and a suite of paintings on domestic Laminex tabletops, this exhibition tells the story of man named Steve presented from the perspective of his family as they cope with the effects of his illness. In addition, the artist weaves his own personal story into the work with a group of paintings that look back on personal moments from Lewer's own life.

Born in Aotearoa New Zealand, Naarm/Melbourne-based artist Richard Lewer is a visual storyteller, well known for his paintings, drawings and moving image works which focus on vulnerable moments and complex aspects of the human condition with insight and empathy.

Following its presentation at the National Gallery in December 2025, *Richard Lewer: Steve* will go on a national tour.

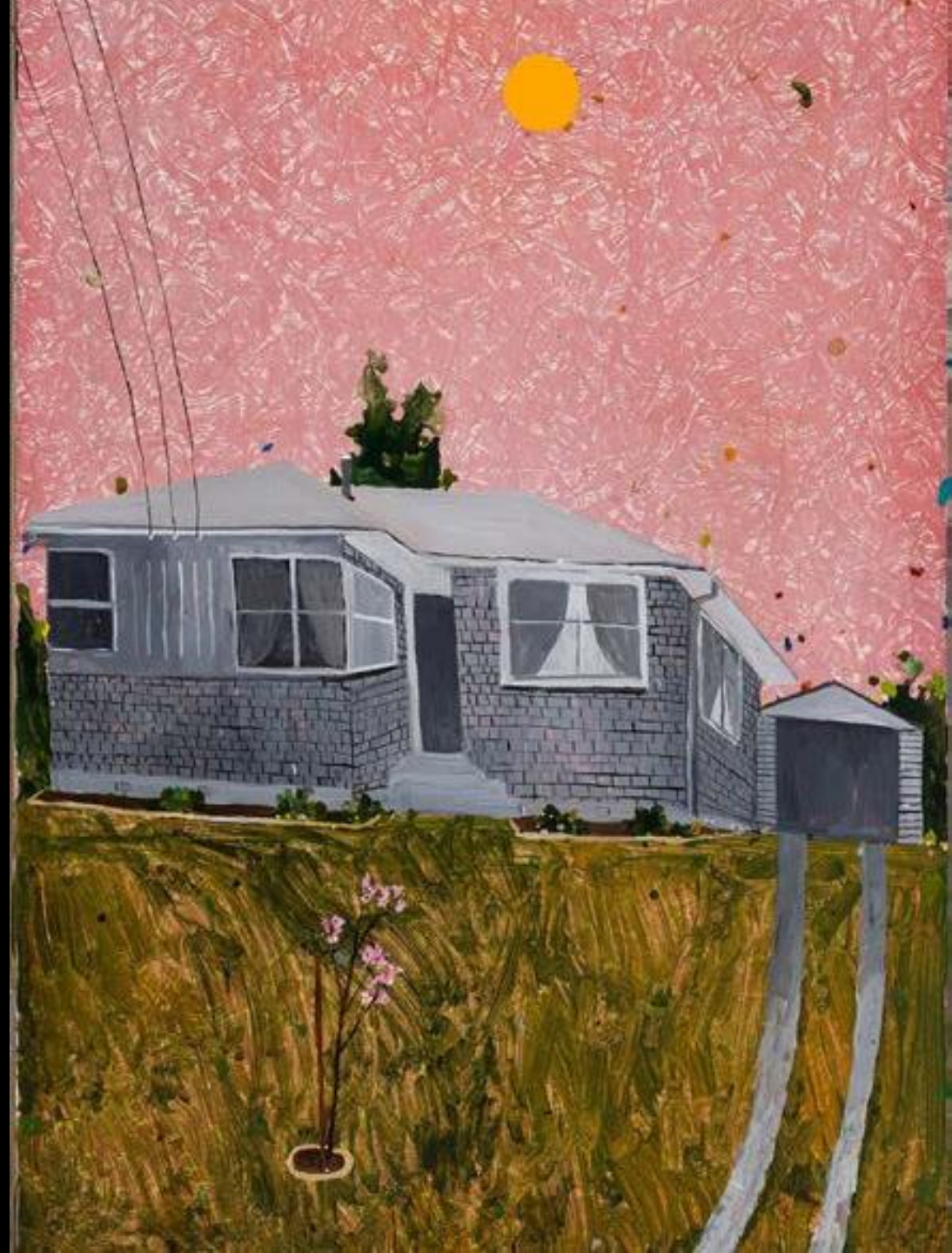
## Available

From August 2026



**Cover image:**  
Richard Lewer  
*Steve*, (detail) 2023–24  
National Gallery of Australia, Kamberrri/Canberra  
purchased 2024

Richard Lewer  
*Steve*, (detail) 2023–24  
National Gallery of Australia, Kamberrri/Canberra  
purchased 2024



**“... every now and again as an artist a special moment comes along that allows you to make a work that will touch so many people’s lives, and for that moment perhaps they don’t feel so alone.’**

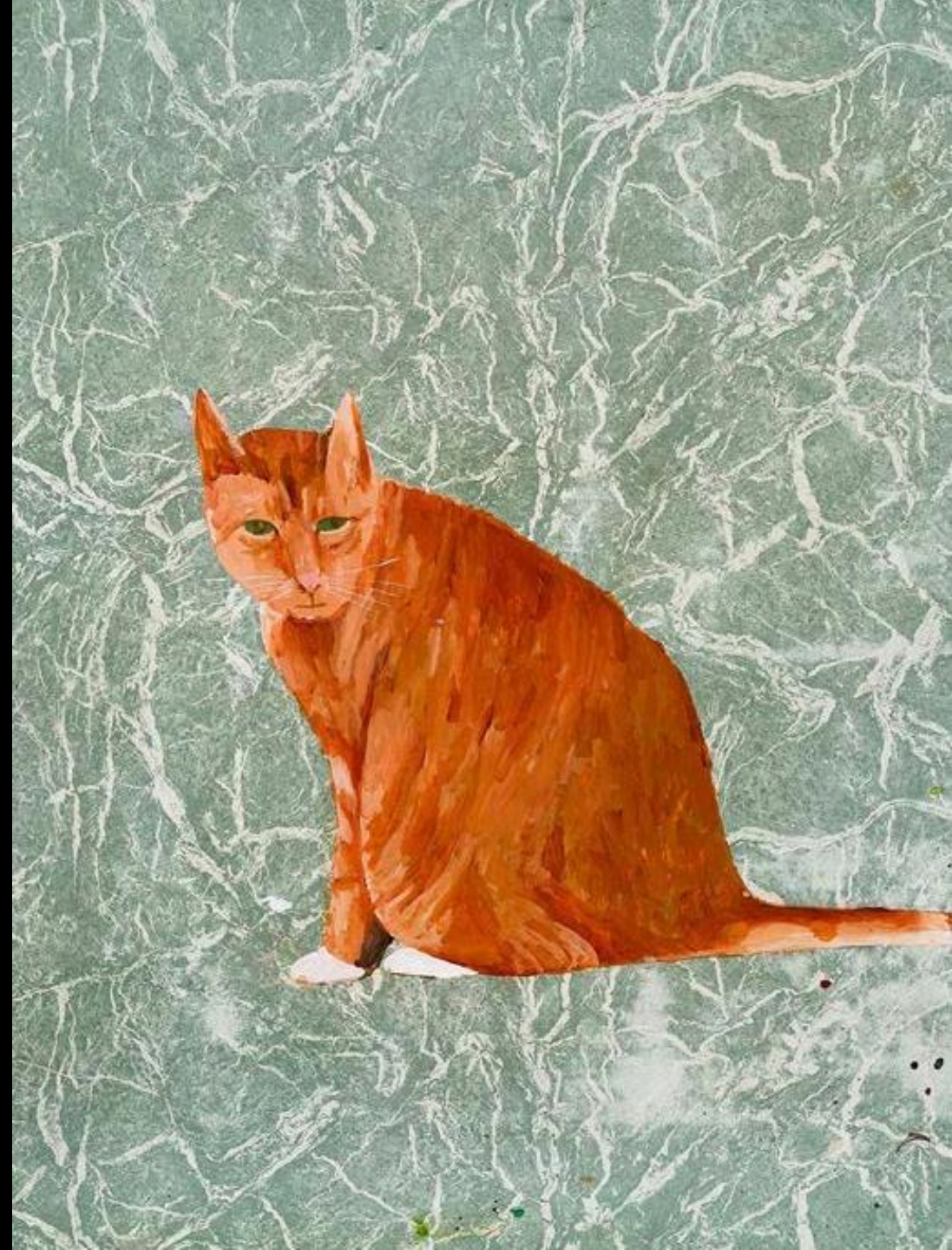
**RICHARD LEWER.**

# Express interest

As this touring exhibition is currently in development, you can share your thoughts and express your interest in hosting it at your venue via this [form](#).

## Questions?

For more information, please email [touringexhibitions@nga.gov.au](mailto:touringexhibitions@nga.gov.au)





**National Gallery of Australia  
Ngunnawal and Ngambri Country  
Parkes Place East, Parkes ACT 2600 Australia  
T+ 61 2 6240 6411 [nga.gov.au](http://nga.gov.au)**