



Summary with Images

348483

(Budden) Phoenix, Frances

Lip magazine

1976



2019.814

(Budden) Phoenix, Frances

Get your abortion laws off our bodies

1980

doyley with glass beads

28.00 (H) x 36.00 (W) cm



76.155

Bellette, Jean

Chorus without Iphigenia

c.1950

oil on composition board

91.50 (H) x 136.70 (W) cm

108.80 (H) x 154.20 (W) x 4.00 (D) cm (framed (overall))



81.2269

Binns, Vivienne

Vivienne Binns and Participants

Mothers' memories, others' memories: postcard rack

1980

screenprints on vitreous enamel on steel; prints attached by nylon line to anodised steel postcard rack

90.40 (H) x 27.00 (W) x 27.00 (D) cm (overall)



2014.2417

Black, Dorrit

Nude

c. 1928

oil on canvas

54.00 (H) x 38.00 (W) cm

710.00 (H) x 540.00 (W) x 30.00 (D) mm (framed (overall))



2004.49.2

Bot, G.W.

Entrance I.

2000

linocut, printed in colour inks, from multiple blocks

94.00 (H) x 52.10 (W) cm (printed image, irregular)

94.00 (H) x 52.10 (W) cm (sheet, irregular)



1978.841.1-20

Boyd, Hermia

Sharma, Satish

Boyd, Cassandra

Sappho of Lesbos

1978



2022.45

Campbell, Cressida

Bedroom nocturne

2022

incised woodblock, painted in watercolour

120.00 cm (diam) (block)

132.40 (H) x 132.40 (W) x 6.50 (D) cm, 136.00 cm (diam) (framed (overall))



80.2262

Card, Mary

Unknown Artist

Doily

1915

crocheted cotton

45.20 (H) x 37.10 (W) cm



65.160

Cossington Smith, Grace

Interior in yellow

1962-64

oil on composition board

121.70 (H) x 90.20 (W) cm

141.40 (H) x 110.20 (W) cm (framed (overall))



2020.44

Croft, Brenda L.

Matilda (Ngambri)

2019

pigment inkjet print

120.00 (H) x 91.00 (W) cm (image)

133.90 (H) x 100.00 (W) cm (sheet)



75.54

Cumbrae Stewart, Janet

Early morning

1924

drawing in colour pastels

75.40 (H) x 55.00 (W) cm (sheet)

84.50 (H) x 6.45 (W) x 4.50 (D) cm (Framed)



2013.685

Darroch, Lee J.

Gunaikurnai waribruk Child possum Cloak

2012

natural earth pigments and thread on Australian common brushtail possum (*Trichosurus vulpecula*) skin pelts

111.00 (H) x 88.00 (W) cm



2016.211.A-AD

Dobson, Rosemary

Bolton, Alec

Chapman, E.C.

Brindabella Press

Greek coins: a sequence of poems with line drawings by the author.

1977

letterpress text; transfer-lithographs, printed in brown ink, each from one stone [or plate]

12.70 (H) x 18.70 (W) x 0.70 (D) cm (book (closed))



349180

Ely, Bonita

Murray River Punch [photograph 1]

1980

series of 13 photographs

33.0 (h) x 48.4 cm (w)



349181

Ely, Bonita

Murray River Punch [photograph 2]

1980

series of 13 photographs

33.0 (h) x 48.4 cm (w)



349182

Ely, Bonita

Murray River Punch [photograph 3]

1980

series of 13 photographs

33.0 (h) x 48.4 cm (w)



349183

Ely, Bonita

Murray River Punch [photograph 4]

1980

series of 13 photographs

33.0 (h) x 48.4 cm (w)



349184

Ely, Bonita

Murray River Punch [photograph 5]

1980

series of 13 photographs

33.0 (h) x 48.4 cm (w)



349185

Ely, Bonita

Murray River Punch [photograph 6]

1980

series of 13 photographs

33.0 (h) x 48.4 cm (w)



349186

Ely, Bonita

Murray River Punch [photograph 7]

1980

series of 13 photographs

33.0 (h) x 48.4 cm (w)



349187

Ely, Bonita

Murray River Punch [photograph 8]

1980

series of 13 photographs

33.0 (h) x 48.4 cm (w)



349188

Ely, Bonita

Murray River Punch [photograph 9]

1980

series of 13 photographs

33.0 (h) x 48.4 cm (w)



349189

Ely, Bonita

Murray River Punch [photograph 10]

1980

series of 13 photographs

33.0 (h) x 48.4 cm (w)



349190

Ely, Bonita

Murray River Punch [photograph 11]

1980

series of 13 photographs

33.0 (h) x 48.4 cm (w)



349191

Ely, Bonita

Murray River Punch [photograph 12]

1980

series of 13 photographs

33.0 (h) x 48.4 cm (w)



349738

Ely, Bonita

Murray River Punch [photograph 13]

1980

series of 13 photographs

33.0 (h) x 48.4 cm (w)



73.629

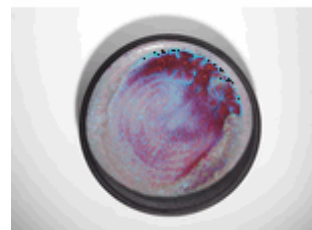
Englund, Patricia

Platter

1968

wheel thrown mauve, red, blue, black glaze on buff body

4.20 (H) cm, 28.40 cm (diam)



73.1218

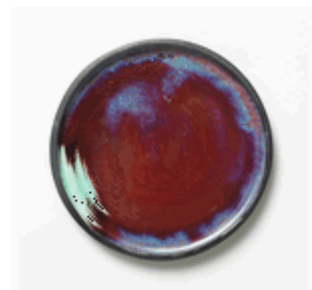
Englund, Patricia

Platter

1969

wheelthrown copper red glaze, blue and green, matt black edge, white body

3.20 (H) cm, 27.40 cm (diam)



84.137

Ford, Sue

Faces

1976

single channel moving image, 16 mm film remastered as digital,
black and white, silent, 8mn 37s; ratio 4:3 [advised by Ben Ford]



86.1024

Frances Burke Fabrics

Burke, Frances

Phoenix, length of fabric

c 1945

screenprint on cotton

223.00 (H) x 119.60 (W) cm



2010.657

Gabori, Mirdidingkingathi Juwarnda Sally

My Grandfather's Country

2009

synthetic polymer paint on canvas

1,357.00 (H) x 1,215.00 (W) x 30.00 (D) mm (stretched)



2019.922

Garage Graphix

Women's housing conference 22-24 May 1987.

1987

offset lithograph, printed in colour inks, from multiple plates

59.50 (H) x 42.00 (W) cm (printed image)

59.50 (H) x 42.00 (W) cm (sheet)



82.1400

Gazzard, Marea

Delos II

1972

glazed earthenware

62.10 (H) x 70.00 (W) x 18.50 (D) cm



93.5

Goodsir, Agnes

The Parisienne

c.1924

oil on canvas

61.00 (H) x 50.10 (W) cm

758.00 (H) x 651.00 (W) x 61.00 (D) mm (framed (overall))



2010.276

Greeno, Dulcie

Untitled (shell necklace)

2010

Maireener and Black Crow shell on polyester cotton thread

190.00 (H) cm



98.138

Greeno, Lola

Shell necklace

1995

Cockles, Maireener, cat's teeth and button shells on cotton string

136.00 (H) x 2.00 (W) cm (circumference)



2015.1208

Griffin, Marion Mahony

Marion Mahony Griffin and Walter Burley Griffin Associate Architects

H. Goldman Manufacturing Company

Cafe Australia chair

1916

blackwood (acacia melanoxylon), plywood, leather

96.00 (H) cm, 47.00 cm (diam)



91.707

Hall, Fiona

Garden of Eden

from Genesis series

1984

gelatin silver photograph, dye

19.30 (H) x 24.50 (W) cm (printed image)

20.30 (H) x 25.20 (W) cm (sheet)



91.708

Hall, Fiona

Temptation of Eve

from **Genesis series**

1984

gelatin silver photograph, dye

19.50 (H) x 24.40 (W) cm (printed image)

20.30 (H) x 25.10 (W) cm (sheet)



91.709

Hall, Fiona

Creation of Adam

from **Genesis series**

1984

gelatin silver photograph, dye

24.20 (H) x 19.40 (W) cm (printed image)

25.10 (H) x 20.30 (W) cm (sheet)



91.710

Hall, Fiona

Exit from Eden

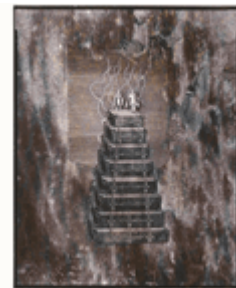
from **Genesis series**

1984

gelatin silver photograph, dye

24.50 (H) x 19.60 (W) cm (printed image)

25.20 (H) x 20.40 (W) cm (sheet)



366303

Hawkes, Ponch

Shiela and Janie

from **Our Mums and us**

1976

gelatin silver print, selenium toned

17.80 (H) x 12.70 (W) cm (printed image)

25.50 (H) x 20.40 (W) cm (sheet)



366304

Hawkes, Ponch

Margaret and Micky

from Our Mums and Us

1978

gelatin silver print, selenium toned

17.80 (H) x 12.70 (W) cm (printed image)

25.60 (H) x 20.40 (W) cm (sheet)



366302

Hawkes, Ponch

Ethel and Margot

from Our Mums and us

1978

gelatin silver print, selenium toned

17.80 (H) x 12.70 (W) cm (printed image)

25.50 (H) x 20.40 (W) cm (sheet)



366301

Hawkes, Ponch

Mrs Mimi Torsh and her daughter Dany

from Our Mums and us

1976

gelatin silver print, selenium toned

17.80 (H) x 12.70 (W) cm (printed image)

25.60 (H) x 20.50 (W) cm (sheet)



366299

Hawkes, Ponch

Lorna and Mavis

from Our Mums and us

1976

gelatin silver print, selenium toned

17.80 (H) x 12.70 (W) cm (printed image)

25.50 (H) x 20.40 (W) cm (sheet)



366300

Hawkes, Ponch

**Rosa and Ruth
from Our Mums and us**

1976

gelatin silver print, selenium toned

17.80 (H) x 12.70 (W) cm (printed image)

25.50 (H) x 20.40 (W) cm (sheet)



2019.925

Hinton-Bateup, Alice

Garage Graphix

Ruth's story

1988

screenprint, printed in colour inks, from multiple stencils

50.10 (H) x 75.50 (W) cm (printed image)

50.10 (H) x 75.50 (W) cm (sheet)



84.833

Intjalki, Atipalku

Ernabella Arts Inc

Untitled

1984

cotton batik

315.00 (H) x 86.50 (W) cm



2010.605

James, Jeanette

Palawa Echidna Quill necklace

2010

Tasmanian Echidna quills and Echidna claw toggle with woven
flax string

62.00 (H) cm (length)



81.3683

Jerrems, Carol

**(Syvanna Doolan, National Black Theatre)
in A Book about Australian Women (Outback Press, 1974)**

1974

gelatin silver photograph

24.60 (H) x 16.20 (W) cm (printed image)

25.40 (H) x 17.00 (W) cm (sheet)



81.3684

Jerrems, Carol

(Syvanna Doolan, National Black Theatre)

in A Book about Australian Women (Outback Press, 1974)

1974

gelatin silver photograph

24.60 (H) x 16.20 (W) cm (printed image)

25.40 (H) x 17.00 (W) cm (sheet)



81.3685

Jerrems, Carol

(Syvanna Doolan, National Black Theatre)

in A Book about Australian Women (Outback Press, 1974)

1974

gelatin silver photograph

24.60 (H) x 16.20 (W) cm (printed image)

25.40 (H) x 17.00 (W) cm (sheet)



81.3682

Jerrems, Carol

(Syvanna Doolan, National Black Theatre)

in A Book about Australian Women (Outback Press, 1974)

1974

gelatin silver photograph

24.60 (H) x 16.20 (W) cm (printed image)

25.40 (H) x 17.20 (W) cm (sheet)



88.279

Jubelin, Narelle

A fallen monarch

from "The Crossing"

1987

cotton embroidery threads, found wood mount and frame,

Perspex

73.40 (H) x 63.30 (W) x 3.50 (D) cm (Frame)

24.40 (H)



91.1308

Kngwarray, Emily Kam

No title

1991

synthetic polymer paint

1,529.00 (H) x 2,506.00 (W) x 60.00 (D) mm (framed (overall))



2018.438

Koolmatrrie, Yvonne

Burial basket

2017

bilbili, (spiny-headed sedge rushes, Cyperus gymnocaulos)

104.00 (H) x 51.00 (W) x 19.00 (D) cm



2010.320

Lahey, Vida

Coolangatta, Kirra Beach, from Tweed Heads

c.1952

oil on composition board

36.90 (H) x 39.80 (W) cm

44.70 (H) x 50.50 (W) x 2.70 (D) cm (framed (overall))



2021.94

Laing, Rosemary

bulletproofglass #3

from the series bulletproofglass

2002, printed 2022

chromogenic photograph

140.40 (H) x 213.40 (W) x 7.50 (D) cm (Framed)



89.617

Lane, Leonie

Redback Graphix

Curtis, Peter

Redback Graphix

Nganampa Health Council

Eat good food.

1987

screenprint, printed in colour inks, from four stencils

89.00 (H) x 59.10 (W) cm (printed image)

92.00 (H) x 61.50 (W) cm (sheet)



82.1573

Larsen, Helge
Lewers, Darani

Armring

1976

sterling silver

5.60 (H) x 6.00 (W) x 5.40 (D) cm



2022.2

Lloyd, Jo
Butterworth, Deanne
Jensen, Rebecca
Coventry, Michaela
Morrison, Duane
Rosetzky, Peter
Treloar, Andrew

Archive the archive

2020

single channel digital video; colour, sound



98.149.1-52

Maddock, Bea

Terra Spiritus...with a darker shade of pale.

Terra Spiritus...with a darker shade of pale. Launceston: the artist, 1993- 98.

1993-98

stencil, printed in hand-ground Launceston ochre, from multiple hand-cut mylar stencils; letterpress text blind printed; hand-written script

28.40 (H) x 76.00 (W) cm (printed image)

28.40 (H) x 76.00 (W) cm (sheet)

28.40 (H) x 3,952.00 (W) cm (printed image)



2022.87

Maudsley, Helen

Selves, surviving others

1985-86

oil on canvas

185.60 (H) x 124.60 (W) x 4.00 (D) cm (framed (overall))



2005.462

McMahon, Marie
Redback Graphix

You are on Aboriginal land

1986

screenprint, printed in colour inks, from five stencils

63.70 (H) x 45.20 (W) cm (printed image)

67.10 (H) x 48.50 (W) cm (sheet)

71.00 (H) x 52.00 (W) cm (backing sheet)



89.1705.1

Moffatt, Tracey

Something more #1

from **Something More**

1989

dye destruction photograph

100.60 (H) x 127.00 (W) cm (printed image)

100.60 (H) x 127.00 (W) cm (sheet)

109.30 (H) x 135.10 (W) x 4.50 (D) cm (Frame)



89.1705.8

Moffatt, Tracey

Something more #8

from **Something more**

1989

dye destruction photograph

100.60 (H) x 127.00 (W) cm

109.30 (H) x 135.10 (W) x 4.50 (D) cm (Frame)



2002.18

Oliver, Bronwyn

Trace

2001

copper wire

30.00 (H) x 245.00 (W) x 15.00 (D) cm



2005.235.A-H

Pigott, Gwyn Hanssen

Pale still life with teapot

2002

glazed porcelain

19.50 (H) x 74.00 (W) x 20.00 (D) cm (overall)



88.326

Preston, Margaret

Flapper

1925

oil on canvas

77.30 (H) x 58.50 (W) cm

902.00 (H) x 734.00 (W) x 60.00 (D) mm (framed (overall))



2010.144.A-C

r e a

PolesApart 2

2009

chromogenic photograph

102.20 (H) x 306.00 (W) cm (overall)



2023.68

Rehfisch, Alison

Lemon and grey

1933

oil on canvas on board

31.00 (H) x 35.50 (W) cm

49.00 (H) x 53.80 (W) x 5.00 (D) cm (framed (overall))



2007.1125

Robertshaw, Freda

Composition

c.1947

oil on hardboard

40.00 (H) x 30.00 (W) cm

537.00 (H) x 438.00 (W) x 70.00 (D) mm (Framed)



366905

Rrap, Julie

**Persona and shadow: puberty
from Persona and shadow**

1984



99.76

Thancoupie (Dr Gloria Fletcher AO)

Cammbel and Paour pot

1982

stoneware, handbuilt with incised decoration painted with white slip and earth oxides

33.00 (H) x 36.00 (W) cm



2000.17

Tomescu, Aida

Ithaca III

in Ithaca I-X

1999

oil on canvas

1,833.00 (H) x 1,530.00 (W) x 45.00 (D) mm, 32.00 kg (weight) (stretched)



83.3106

Tune, Lyn

Insigns

c.1982

silver, 18 karat gold, titanium, ivory, coral, gilding metal, Indian gemstone

19.20 (H) x 23.60 (W) cm



87.1654.6

Womens Domestic Needlework Group

McMahon, Marie

(Budden) Phoenix, Frances

Sydney University Art Workshop (Tin Sheds)

Aboriginaland. Land rights, not mining

in Womens Domestic Needlework Group, Series of 10 posters. Sydney 1979

1979

screenprint, printed in colour inks, from multiple stencils

73.20 (H) x 48.60 (W) cm (printed image)

78.80 (H) x 51.00 (W) cm (sheet)



87.1654.5

Womens Domestic Needlework Group

McMahon, Marie

(Budden) Phoenix, Frances

Sydney University Art Workshop (Tin Sheds)

For twenty years

in Womens Domestic Needlework Group, Series of 10 posters. Sydney 1979

1979

screenprint, printed in colour inks, from multiple stencils

73.60 (H) x 48.60 (W) cm (printed image)

79.00 (H) x 51.10 (W) cm (sheet)



2010.1109

Yunupingu, Nyapanyapa

Mangutji #5

2008

natural earth pigments and binder on eucalyptus bark

115.50 (H) x 84.00 (W) x 4.50 (D) cm

